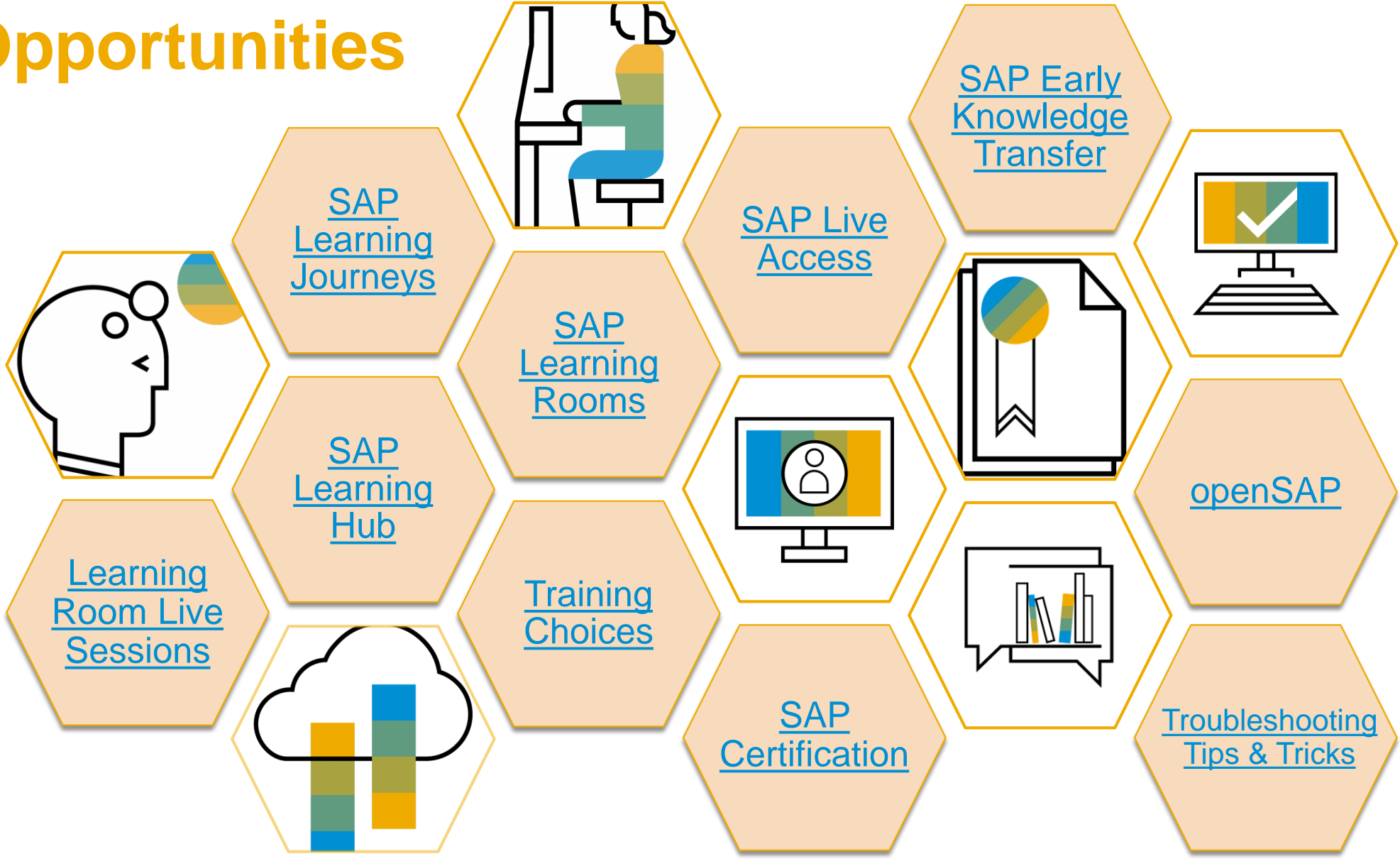


SAP S/4HANA Cloud Learning Opportunities



PUBLIC

SAP S/4HANA Cloud Training Choices

SAP S/4HANA Cloud Training Choices

	Self-Paced Learning	Virtual Live Classroom Training	Classroom Training
What is it?	<ul style="list-style-type: none"> SAP Learning Hub is a cloud-based learning platform that provides access to training content, SAP Learning Rooms supporting top curricula, and live training system access for hands-on practice. 	<ul style="list-style-type: none"> Instructor-led virtual classroom training via Adobe Connect. Designed for certification exam preparation. 	<ul style="list-style-type: none"> Instructor-led onsite classroom training. Designed for certification exam preparation.
Live Sessions	<ul style="list-style-type: none"> Access expert-led live sessions in the SAP S/4HANA Cloud Implementation Learning Room. 	<ul style="list-style-type: none"> Length varies by course Per day: Typically 4 hours online instructor-led training & demonstration in a live system and 4 hours of instructor availability for support during student self-study time. 	<ul style="list-style-type: none"> Length varies by course Per day: 8 hours of instructor-led training & demonstration in a live system. Instructor support provided throughout business day.
Training Content	<ul style="list-style-type: none"> Access to SAP S/4HANA Cloud Line of Business (LoB) specific Handbook and E-Learning training course content. 	<ul style="list-style-type: none"> Included in course fee 	<ul style="list-style-type: none"> Included in course fee
Training System	<ul style="list-style-type: none"> SAP Live Access systems to support each SAP S/4HANA Cloud LoB specific training course. 	<ul style="list-style-type: none"> Included in course fee 	<ul style="list-style-type: none"> Included in course fee
Collaboration	<ul style="list-style-type: none"> Access Q&A forums and additional content in the SAP S/4HANA Cloud Implementation Learning Room via SAP Learning Hub. 	<ul style="list-style-type: none"> Access to the TS4C01 SAP S/4HANA Cloud Onboarding Academy VLC Jam group included. 	<ul style="list-style-type: none"> Access to the TS4C01 SAP S/4HANA Cloud Onboarding Academy VLC Jam group included.
Get Started	<ul style="list-style-type: none"> Click here for more information 	<ul style="list-style-type: none"> Click here to view sessions and register through SAP Training. 	<ul style="list-style-type: none"> Click here to view all upcoming sessions and register through SAP Training.

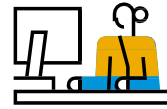
SAP Learning Hub

SAP Learning Hub

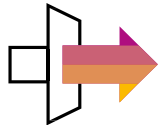
SAP Learning Hub offers effective training choices for each and every user, whatever their natural learning style or approach.



Learning Journeys. Visual, interactive guides detailing the recommended route to gain full competence, or expand your skills, for specific roles and SAP solutions. In mapping out a complete pathway, Learning Journeys also indicate digital elements of a blended learning strategy.



SAP Learning Rooms. Social learning forums for exchanging ideas, skills, and tips with peers, and getting advice and guidance from SAP solution experts through live sessions and Q&A. SAP Learning Rooms also include video tutorials, best-practice documentation, and study materials for certification exams for SAP software.



E-Learning Courses. Access self-paced online courses covering a variety of popular SAP solution topics. Each includes highly effective learning components such as recorded expert instruction modules and real-world simulations. Learn entirely online, at your own pace, and on your own schedule.



E-Books. Online e-books for introductory to advanced courses. Compatible with all desktop and mobile devices, our e-books feature completion tracking, study time logging, bookmarking, and many other capabilities to ease and enhance self-learning.



SAP Live Access. On-demand, hands-on access to live, fully configured versions of SAP software applications for practicing on your own. Work through exercises and refine your skills in a secure and private real-world environment, separate from your company's production instance of the application. SAP Live Access is an add-on purchase option exclusively for SAP Learning Hub subscribers.



SAP Learning Hub, discovery edition. Try before you buy with SAP Learning Hub, discovery edition – a trial environment for our on-demand learning solution. Registration is free and easy, all you need is a valid e-mail address.

[Learn more](#) | [Try it free](#)
[Compare SAP Learning Hub Editions](#)

100+

Learning Journeys

100+

SAP Learning Rooms

110+

SAP Solution Areas

400+

SAP Live Access Systems

130K+

SAP Learning Room Members

500K+

External Users

9

Languages

SAP Learning Hub Editions



**SAP Learning Hub,
professional edition**

This edition helps IT professionals build and enhance their skills or prepare for certification exams. It offers unlimited access to up-to-the-minute SAP training – online courses, e-books, and more – as well as a dynamic online community and social learning environment.

[Learn more](#) | [Info sheet](#)



**SAP Learning Hub,
business edition**

Give business users at all skill levels relevant online SAP training – whether you're an SMB or large-scale enterprise. Deliver high-quality core e-learning content on demand, SAP software simulations, progress tracking, and access to collaborative learning rooms.

[Learn more](#) | [FAQ](#)



**SAP Learning Hub,
solution editions**

Designed to accelerate solution implementation, deployment and ongoing enablement among all roles involved in implementation and deployment, this comprehensive online platform offers enterprise-wide access to tailored digital learning resources within **eight SAP solution areas**.

[Learn more](#) | [Info sheet](#) | [SAP S/4HANA Cloud](#)



**SAP Learning Hub,
edition for SAP Enterprise Support**

Help key users, IT and line of business users maximize the value of their SAP software – through access to expert-level webinars, best practices, tutorials, and more. Access to this edition is included with SAP Enterprise Support and SAP Enterprise Support, Cloud Edition.

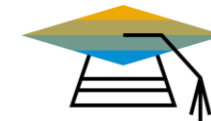
[Learn more](#) | [Sign up now](#)



**SAP Learning Hub,
edition for SAP PartnerEdge**

SAP PartnerEdge program members get training for sales, pre-sales, marketing, and support roles in the Partner Company. Our PartnerEdge edition of SAP Learning Hub delivers SAP online training content in a variety of formats, enhanced by virtual collaboration rooms.

[Learn more](#) | [Collaboration Rooms \(S-user ID Required\)](#)



**SAP Learning Hub,
student edition**

Help post-secondary students build a successful career supported by SAP software. In a personalized learning portal, students can tap a vast body of knowledge on SAP innovations – and take online training courses on SAP S/4HANA, SAP SuccessFactors, and other solutions.

[Info sheet](#) | [FAQ](#)

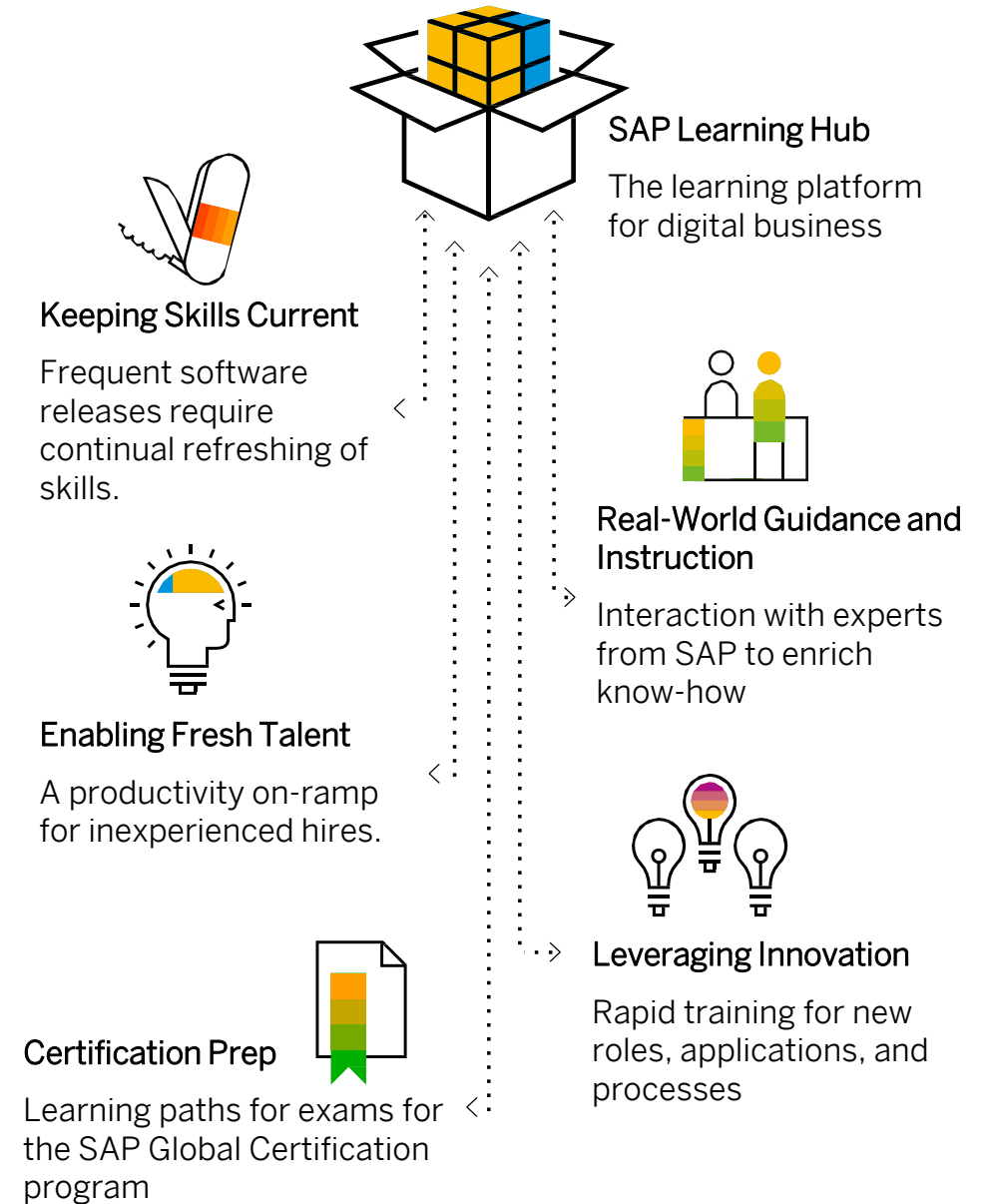
SAP Learning Rooms

SAP Learning Rooms

SAP Learning Rooms are social learning forums for exchanging ideas, skills, and tips with peers, and getting advice and guidance from SAP solution experts through live sessions and Q&A. SAP Learning Rooms also include video tutorials, best-practice documentation, and study materials for certification exams for SAP software.

You can use SAP Learning Rooms to:

- Prepare for SAP software projects or customer engagements
- Study for SAP certification exams
- Build new SAP software skills
- Reinforce and expand your current SAP software skills
- Network with other learners in a learning community
- Ask questions and receive feedback from an experienced subject-matter expert from SAP



Accessing the SAP S/4HANA Cloud Implementation Learning Room

You have immediate access to all SAP Learning Rooms for which you are eligible directly from the SAP Learning Rooms home page.

1. Select **Learning Rooms** from the navigation menu in the upper left corner.
2. Expand the **Enterprise Management** section.
3. Scroll down and select the **SAP S/4HANA Cloud Implementation Learning Room**.
4. Accept the **Terms of Use**. This is a one-time prompt that covers all SAP Learning Rooms you access moving forward.

Which SAP Learning Rooms can I access?

Download the [Learning Hub Content Catalog](#) and filter by your SAP Learning Hub Edition.

The screenshot shows the SAP Learning Rooms interface. A navigation menu is open in the top left corner, with 'Learning Rooms' selected. The main content area displays a list of learning rooms. The 'Enterprise Management' section is expanded, showing a list of topics: Analytics, Cross and Trending Topics, Customer Relationship Management, and Data Management. The 'SAP S/4HANA Cloud Implementation Learning Room' is highlighted at the bottom of the list. Three numbered callouts are present: 1 points to the 'Learning Rooms' menu item, 2 points to the 'Enterprise Management' section header, and 3 points to the 'SAP S/4HANA Cloud Implementation Learning Room' entry.

1

2

3

Explore SAP Learning Rooms

SAP Learning Hub

Welcome Room (Enrolled) This Learning Room is intended for SAP Learning Hub users who are seeking materials and expert resources to support them with their learning experience.

Analytics +

Cross and Trending Topics +

Customer Relationship Management +

Data Management +

Enterprise Management -

SAP Activate Learning Room for SAP S/4HANA (Enrolled) This learning room is for Program Managers, Project Managers, Functional Consultants and Technology Consultants who want to learn about how to implement SAP solutions using the SAP Activate . Different learning maps geared towards different implementation use cases are provided to cover the corresponding implementation process, tools and accelerators.

SAP S/4HANA Cloud Implementation Learning Room (Enrolled) This learning room is intended for customers and professionals involved in the implementation of SAP S/4HANA Cloud.

Learning Room **Live Sessions**

Join Live Sessions in the SAP S/4HANA Cloud Implementation Learning Room

1. Log into **SAP Learning Hub** and navigate to the [SAP S/4HANA Cloud Implementation Learning Room](#) from your **Groups**.
2. Select **Events** to view the calendar of upcoming live sessions.
3. Select an individual event from the calendar.
4. Select **View** to see event information, including the topic(s) covered, and access the meeting link to join the session.

Note: Audio is VOIP-only (no call-in numbers)

Note: Event times are displayed in GMT / BST by default. Please verify the scheduled event time in your time zone prior to joining.

The screenshot displays the SAP S/4HANA Cloud Implementation Learning Room interface. The top navigation bar includes 'Home', 'Pro', 'Groups' (highlighted with a yellow box and '1'), 'Bookmarks', and 'Calendar'. The main header reads 'SAP S/4HANA Cloud Implementation Learning Room'. Below this is a calendar for August 2017, with a 'View' button highlighted by a yellow box and '4'. A detailed event view for 'Finance - Live Sessions' is overlaid on the calendar, showing the event title, description, time (07:00 am - 09:00 am), and a meeting link. The event view also has 'View', 'Edit', and 'Export Event' buttons. The 'Events' tab in the left sidebar is highlighted with a yellow box and '2'. A specific event on the calendar is highlighted with a yellow box and '3'.

Sun	Mon	Tue	Wed	Thu	Fri	Sat
30	31	1	2	3	4	5
6	7	8	9	10	11	12
13	14	15	16	17	18	19
				24	25	26
				31	1	2
				7	8	9

Live Sessions in the SAP S/4HANA Cloud Implementation Learning Room



SAP Live Access

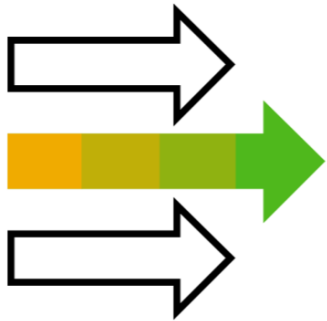
SAP Live Access



The SAP Live Access environment enables SAP Learning Hub subscribers to work with fully configured SAP software systems to carry out class exercises, cross-train, and experiment.

When you use SAP Live Access, your system environment is specifically configured for the course you are studying. There's no system setup on your side – just launch and learn with a system designed specifically to accompany your training course content and exercises.

You can purchase access in blocks (contingents) of 20 hours. Each block gives you up to 30 days to carry out exercises or explore the fully configured system.



Access & Registration

1. Download the [SAP Live Access User Guide](#)
2. Navigate to <https://liveaccess.sap.com/>
3. Keyword search for a course code
4. Purchase an [SAP Live Access Contingent](#)



Prepare for SAP Certification Exams

- Use SAP Learning Hub to access handbooks and e-learnings to study training course content
- Use Learning Rooms to collaborate with other students and ask questions to experts
- Test your skills in an environment designed specifically to accompany your course with SAP Live Access.

SAP Learning Journeys

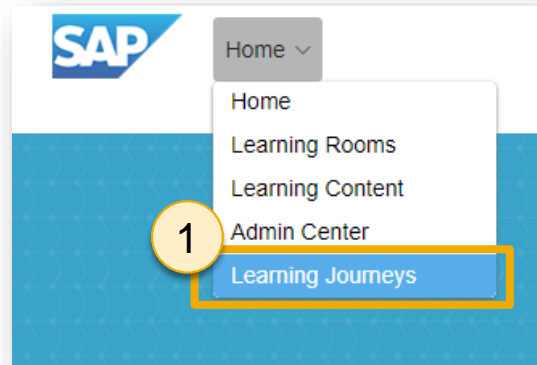
SAP Learning Journeys

Learning Journeys are visual, interactive guides detailing the recommended route to gain full competence, or expand your skills, for specific roles and SAP solutions. In mapping out a complete pathway, Learning Journeys also indicate digital elements of a blended learning strategy.



Access SAP Learning Journeys

1. Log into **SAP Learning Hub** and select **Learning Journeys** from the main navigation menu in the upper left corner **OR** navigate to: <https://training.sap.com/learning>
2. Filter by **Topic** and select **Enterprise Management – SAP S/4HANA Cloud**
3. Select a **Learning Journey** and get started!



Learning Journeys

A Learning Journey is a visual guide of the path to become fully competent in an SAP innovation. Select a Learning Journey below to download it. [More](#)

Choose your: **2** Topic ▶ Role ▶

Showing Learning Journeys: SAP S/4HANA Cloud,

- SAP Hybris Marketing Cloud - Implementation & Configuration
- SAP S/4HANA Cloud Analytics
- SAP S/4HANA Cloud End-user Enablement
- SAP S/4HANA Cloud Fiori Administration
- SAP S/4HANA Cloud for Sales - Implementation & Configuration
- SAP S/4HANA Cloud for Finance - Implementation & Configuration
- SAP S/4HANA Cloud for Manufacturing - Implementation & Configuration
- SAP S/4HANA Cloud for Procurement - Implementation & Configuration
- SAP S/4HANA Cloud for Professional Services - Implementation & Configuration
- SAP S/4HANA Cloud Key-user Enablement **3**
- SAP S/4HANA Cloud Project Team Onboarding

Learning Journey: SAP S/4HANA Cloud

Start with an overview

- S/4HANA Overview Learning Room (Register, Learning Room)
- SAP S/4HANA In-a-Nutshell (openSAP, -3 hrs.)
- SAP S/4HANA Use Cases (openSAP, -12 hrs.)

Go deeper and become fully competent as an S/4HANA Key-user / Lifecycle Manager

- S/4HANA Cloud Implementation
 - SAP Activate Learning Room (Register, Learning Room)
 - Implementation of SAP S/4HANA (openSAP, 12hrs)
 - SAP S/4HANA Cloud Trial System with Guided Tours (Launch ▶)
- Implementation & Configuration
 - SAP S/4HANA Cloud Implementation Learning Room (Register, Learning Room)
 - Working with the Launchpad (Launch ▶)
 - Working with Apps (Launch ▶)
 - Configuration & User Management (Launch ▶)

SAP Early Knowledge Transfer

Early Knowledge Transfer Content



Early Knowledge Transfer (EKT) is SAP's enablement offering for innovations. Available with Release To Customer (RTC), it provides you with a head start to adopting new products.

EKT builds on, and succeeds the Ramp-Up Knowledge Transfer (RKT) approach, and is delivered through SAP Learning Hub to provide:

- Simple access to learning content through SAP SuccessFactors Learning programs and state-of-the-art online courses.
- Collaboration with other learners and SAP experts through Learning Rooms leveraging SAP Jam.
- Opportunities to practice and experience new SAP products hands-on in a sandbox/early access environment.

Get Started: EKT User Registration Guides for [Customers & Partners](#) | [SAP Employees](#)



SAP S/4HANA Cloud Upgrade Schedule

Quarterly upgrades are performed as follows:

- **(Q) Quality system** is upgraded to the latest release on 1st weekend after RTC date.
- **(P) Production system** is upgraded on the 3rd weekend after RTC date.
- **(S) Starter system** for customers with no P system yet is upgraded on 2nd weekend after RTC date.

Find upcoming RTC dates in the [SAP S/4HANA Cloud Release Information](#).

Visit the [SAP Cloud Trust Center](#) for information regarding the contract for cloud services.

Explore cloud security around the world in [SAP Data Centers](#).

Early Knowledge Transfer Sandbox / Early Trial Environment

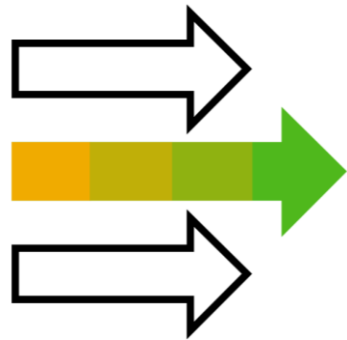


The Early Knowledge Transfer Sandbox / Early Trial Environment helps you explore the innovations delivered in the latest release of SAP S/4HANA Cloud. The landscape is a playground that comes preconfigured with a set of logistics, finance and analytics business scenarios.

You can use the EKT learning map content as a reference while using the sandbox/early trial, but please be aware the scenarios and capabilities are not fully configured, and therefore may not work as expected. However, all users have full authorization to configure and create scenarios, and configure the Fiori Launchpad.

Access & Registration

- Access to the sandbox/early trial system runs on a weekly basis and access is granted every Monday morning.
- Registration for access to the following week's system is open until 16:00 CET on the preceding Thursday. After this date, a confirmation email will be sent to you with access details from e-learning@sap.com.
- Please check your spam/junk filter or add e-learning@sap.com as a trusted email address to ensure you receive your access information.



Important Information

- The sandbox/early trial environment is a shared landscape (up to 20 learners in parallel), so please use the authorizations carefully.
- Systems access is currently limited to the first 100 registrations per week.
- Scenarios and capabilities are not fully configured in the sandbox/early trial, and therefore may not work as expected.

SAP Certification

Your path to SAP S/4HANA Cloud Certification

Foundational Knowledge



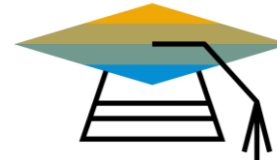
- Begin with the [SAP S/4HANA Cloud Project Team Onboarding for IT Professionals Learning Journey](#)
- Use SAP Learning Hub to access handbooks and e-learnings to study training content. [Search the catalog](#).
- Use the [SAP S/4HANA Cloud Implementation Learning Room](#) to collaborate with other students, ask questions to experts, and [attend live sessions](#).
- Test your skills in an environment designed specifically to accompany your training course with [SAP Live Access](#).

Solution Proficiency



- Explore the SAP S/4HANA Cloud Line of Business (LoB)-specific [SAP Learning Journeys](#) to narrow your focus:
 - Sales
 - Finance
 - Procurement
 - Manufacturing
 - Professional Services
- Gain even deeper expertise with our LoB-specific [SAP S/4HANA Cloud Learning Room Live Sessions](#).
- Utilize your course-specific [SAP Live Access](#) system to test and experiment with the solution.

Certification



- Check the [SAP List of Valid Exams](#) for the latest published certifications.
- Prepare for your certification exam by reviewing the [SAP Certification Hub Exam Process](#) and the [FAQ](#)
- [Purchase](#) your SAP Certification in the Cloud subscription to complete your exam. (Good Luck!)
- Learn how to use [SAP Credential Manager](#), the complementary service provided to enable you to easily manage your certification status and stay current.

Stay Current



- Review the [SAP S/4HANA Cloud Quarterly Upgrade Schedule](#).
- Get familiar with new features as soon as they're released with Early Knowledge Transfer content.
- Check out [SAP Innovation Discovery](#) to understand the business context, key benefits, and technical information regarding existing features/functionality, and planned future enhancements for SAP S/4HANA Cloud.
- Explore solution documentation on [SAP Help Portal](#) and keep an eye on future plans with [SAP Road Maps](#).

openSAP

Free SAP Training with openSAP



Learn about our latest innovations through gamification and connections with other learners and SAP experts **with massive open online courses (MOOCs) delivered on the openSAP platform.**

Created for **SAP professionals, developers, consultants, entrepreneurs, professors, and students**, these free-of-charge courses give you the flexibility you need to learn when, where, and how you choose, in addition to having the opportunity to meet experts and peers in the course forums and earn a certificate through gamification.

All course material is delivered online and you can access it at any time that suits you. To sign up, all you need is a valid e-mail address.

Learn more at <https://open.sap.com>



Troubleshooting **Tips & Tricks**

SAP Partners & Customers | Common Issues & Solutions

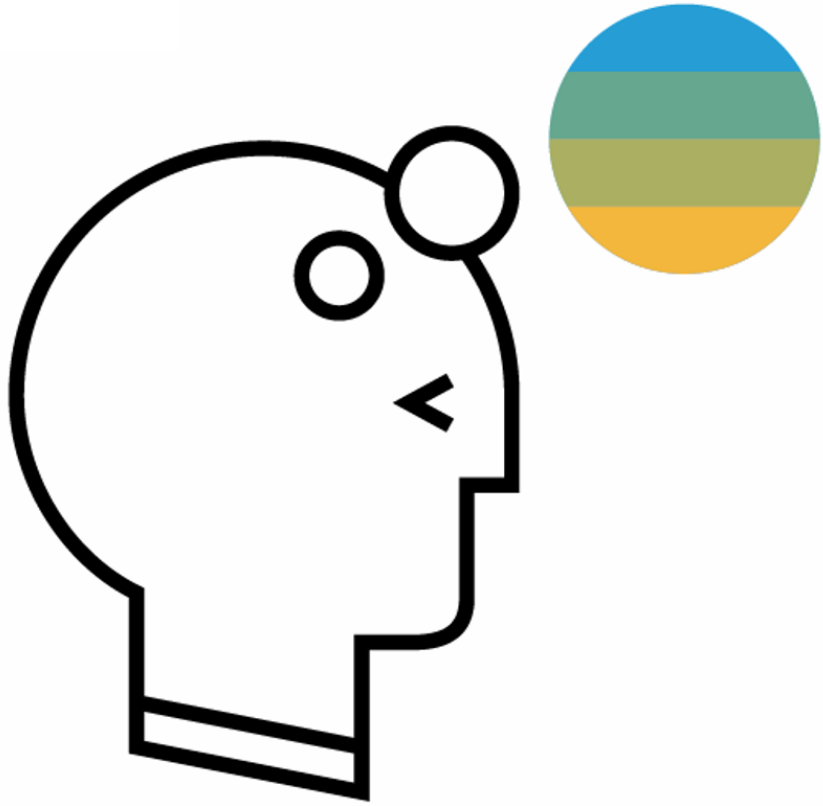
[SAP Training | Help Center User Documentation](#)

Issue	Solution
<ul style="list-style-type: none"> • Cannot join an SAP Learning Room • Cannot join an SAP PartnerEdge Collaboration Room • Cannot access a link to a Learning Room • Received message “Access Denied” 	<ul style="list-style-type: none"> • Verify your S-user ID. Make sure you are using the correct S-user ID to access SAP PartnerEdge Collaboration Rooms through SAP PartnerEdge, or Professional edition SAP Learning Rooms through SAP Training. In some cases, a Partner’s S-user ID may have expired, or has not been assigned the correct permissions. • Contact your internal SAP admin. If you are still unable to log into PartnerEdge or SAP Training, contact your internal SAP system administrator. The responsibility of maintaining S-user IDs has been handed over to the internal SAP admins at each partner organization. • Use a different browser or incognito mode. Navigate to Learning Hub through SAP PartnerEdge or SAP Training and enter your S-user ID to log in. <p>Why does this work? SAP Partners have access to two different catalogs of SAP content and Learning Rooms – PartnerEdge edition and Professional edition. The SAP PartnerEdge Collaboration Rooms are accessed through the PartnerEdge website, and the SAP Learning Rooms are accessed through the SAP Training website. Within the same browser, you typically cannot be logged into both editions of SAP Learning Hub. Also, most browsers save cookies by default and will log you into the SAP Learning Hub edition you accessed in your last sessions.</p> <ul style="list-style-type: none"> • Contact support. If you are still having issues accessing SAP Learning Hub through PartnerEdge or SAP Training, contact: <ul style="list-style-type: none"> • e-learning@sap.com for technical issues regarding the Professional edition Learning Rooms • partner@sap.com for technical issues regarding the SAP PartnerEdge Collaboration Learning Rooms
<ul style="list-style-type: none"> • Cannot access a link to content in SAP Learning Hub; the SAP Training website loads instead of SAP Learning Hub 	<ul style="list-style-type: none"> • Refresh your browser and try again. You may have been logged out of an active session in SAP Learning Hub. Sessions time-out after 10 minutes of inactivate. Refresh your browser, then try clicking the link again to reactivate your Learning Hub session. • Log into SAP Learning Hub in a new browser tab. Open a new tab in your browser, log into SAP Learning Hub, then refresh the original tab or click the link again. The Learning Hub will recognize you are logged into an active session in the browser and should load the link successfully.
<ul style="list-style-type: none"> • Cannot locate SAP S/4HANA Cloud content in PartnerEdge Collaboration Room 	<p>There are two similar PartnerEdge Collaboration Rooms – one for SAP S/4HANA on premise, and one for SAP S/4HANA Cloud. Please make sure to join the correct room.</p> <ul style="list-style-type: none"> • All SAP PartnerEdge Collaboration Rooms (S-user ID Required) • SAP S/4HANA Cloud PartnerEdge Collaboration Room (S-user ID Required)

SAP Employees | Accessing SAP Learning Hub and SAP Learning Rooms

1	Create an IT Direct ticket: https://itdirect.wdf.sap.corp/		
2	Click Service Request		
3	Select the category SRKPS_EDUC_LEARNINGHUB		
4	Enter the text provided below that best fits your situation and your personal information in the ticket. Please note: You must have an active SAP Learning Hub account before you can join an SAP Learning Room or PartnerEdge Collaboration Room.		
	<p>Short Text: SAP Learning Hub Account Request</p> <p>Details: Dear Learning Hub team, I am part of the [XX] team and need access to the Professional edition and PartnerEdge edition Learning Rooms for the following business reason: Demo Purposes and collaboration with Partners and/or Customers in Learning Rooms. Please create an SAP Learning Hub account for me with access to the Professional edition and PartnerEdge edition catalogs of SAP Learning Rooms.</p> <p>User: [I/D/CXXXXX] Email: [XX@sap.com]</p>	<p>Short Text: Learning Room Access Issue</p> <p>Details: Dear Learning Hub team, I am part of the [XX] team and need access to the Professional edition catalog of Learning Rooms for the following business reason: Demo Purposes and collaboration with Partners and/or Customers in Learning Rooms. Please grant me access to the Professional edition catalog of SAP Learning Rooms.</p> <p>User: [I/D/CXXXXX] Email: [XX@sap.com]</p>	<p>Short Text: PartnerEdge Collaboration Room Access Issue</p> <p>Details: Dear Learning Hub team, I am part of the [XX] team and need access to the PartnerEdge catalog of Learning Rooms for the following business reason: Demo Purposes and collaboration with Partners in Collaboration Learning Rooms. Please grant me access to the PartnerEdge edition catalog of SAP Learning Rooms.</p> <p>User: [I/D/CXXXXX] Email: [XX@sap.com]</p>
5	Check and Send. You should receive a response from the Learning Hub support team within a couple days.		
6	After your SAP Learning Hub account is activated, bookmark the internal SSO link below and log in. https://accounts.sap.com/saml2/idp/usso/Learning_Hub?sp=https://www.successfactors.eu/learninghub		
7	Click here to learn how to join the SAP S/4HANA Cloud Implementation Learning Room.		
Note	Please refer to this slide for information regarding other common technical issues and solutions before contacting support. Please note: e-learning@sap.com should NOT be used by internals. This channel is dedicated to SAP Partners and Customers. Always submit an IT Direct ticket under category SRKPS_EDUC_LEARNINGHUB to contact the Learning Hub Support Team for internal issues.		

Thank you!



**Never stop learning,
never stop growing.**

© 2017 SAP SE or an SAP affiliate company. All rights reserved.

No part of this publication may be reproduced or transmitted in any form or for any purpose without the express permission of SAP SE or an SAP affiliate company.

The information contained herein may be changed without prior notice. Some software products marketed by SAP SE and its distributors contain proprietary software components of other software vendors. National product specifications may vary.

These materials are provided by SAP SE or an SAP affiliate company for informational purposes only, without representation or warranty of any kind, and SAP or its affiliated companies shall not be liable for errors or omissions with respect to the materials. The only warranties for SAP or SAP affiliate company products and services are those that are set forth in the express warranty statements accompanying such products and services, if any. Nothing herein should be construed as constituting an additional warranty.

In particular, SAP SE or its affiliated companies have no obligation to pursue any course of business outlined in this document or any related presentation, or to develop or release any functionality mentioned therein. This document, or any related presentation, and SAP SE's or its affiliated companies' strategy and possible future developments, products, and/or platform directions and functionality are all subject to change and may be changed by SAP SE or its affiliated companies at any time for any reason without notice. The information in this document is not a commitment, promise, or legal obligation to deliver any material, code, or functionality. All forward-looking statements are subject to various risks and uncertainties that could cause actual results to differ materially from expectations. Readers are cautioned not to place undue reliance on these forward-looking statements, and they should not be relied upon in making purchasing decisions.

SAP and other SAP products and services mentioned herein as well as their respective logos are trademarks or registered trademarks of SAP SE (or an SAP affiliate company) in Germany and other countries. All other product and service names mentioned are the trademarks of their respective companies.

See <http://global.sap.com/corporate-en/legal/copyright/index.epx> for additional trademark information and notices.